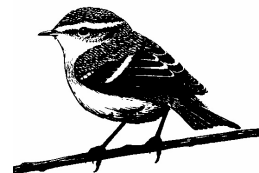


# Warbler



## A View from Ryedale House

I have started to attend the various Wold Parish Council meetings whenever possible to see what the local issues are and hope to also meet some of you there. In addition I have started to look into the the current deployment of broad services throughout Ryedale as well as mobile signal reception and the state of roads.

It would be greatly appreciated if residents can please let me know what their current broadband speeds are and if any have access to superfast broad band. I would also like to know if you have mobile signal coverage or not and if anyone has access to a 4G signal. Finally if any reported potholes that have not been dealt with and the general state of the roads within your area.

I will be preparing an overview of the state of telecommunications and roads within the Wolds as well as the wider Ryedale district to see how see how some of these shortcomings can best be addressed.

Cllr Tharik Jainu-Deen  
Ryedale District Council  
email: [cldr.tharik.jainu-deen@ryedale.gov.uk](mailto:cldr.tharik.jainu-deen@ryedale.gov.uk)  
Mobile: 07769 681162  
Landline: 01944 738101

Final copy date 18th August for the September issue to:-  
Trevor Thomson  
Gypsey Cottage, Main Road, Weaverthorpe, YO17 8EY  
Telephone: 01944 738804  
Email: [warbler@live.co.uk](mailto:warbler@live.co.uk)

(DISCLAIMER: Any correspondence/articles printed in the Warbler are entirely the responsibility of the contributor)

The Warbler is available on the Villages Website.



Get ready to beautify your beans,  
tart up your tomatoes, cook up a cake  
or get crafty



for the

### WEAVERTHORPE & DISTRICT PRODUCE SHOW

Weaverthorpe Village Hall  
Saturday 29th August 2015

Entries will be taken at the Village Hall from 7pm to 9pm on Thursday 27th August

Staging of exhibits from 8.30 to 10 am on Saturday 29th August

Judging will precede the opening of the show to the public at 2.15pm  
Presentation of Prizes at 4pm

Copies of the schedule are available from Mrs Anne Downes, tel: 738637  
By e-mail from [penelope.house@btinternet.com](mailto:penelope.house@btinternet.com)  
Or download from  
[www.luttonsandweaverthorpe.ryedaleconnect.org.uk](http://www.luttonsandweaverthorpe.ryedaleconnect.org.uk)

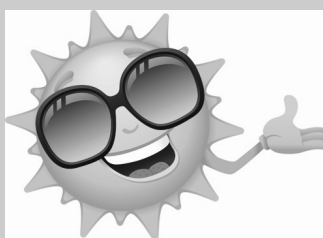


All produce to be grown in Weaverthorpe, Helperthorpe, Butterwick, East Lutton, West Lutton, Foxholes or Kirby Grindalythe

## Wolds Valley Family Fun Day



Sunday 30th August 2015  
All meet at Wharram Percy  
Medieval Village at 12 o'clock



Everyone welcome  
BYO Food & Drink

NEED HELP GETTING  
THERE ?  
CONTACT  
TRISH AT WEAVERTHORPE  
738752  
MARIAN AT WEST LUTTON  
738501  
CHRISTINE AT KIRBY  
738616  
RICHARD AT WHARRAM  
768185

Don't forget the Villages Website (<http://luttonsandweaverthorpe.ryedaleconnect.org.uk>)

The Wolds Valley Warbler provides a means of communication between the communities of: Wharram-Le-Street, Duggleby, Kirby Grindalythe, West Lutton, East Lutton, Helperthorpe, Weaverthorpe, Butterwick and Foxholes.



t : 01944 738 274  
f : 01944 738 223  
e : [info@lhsleightholme.co.uk](mailto:info@lhsleightholme.co.uk)

Steel fabrication, erection and cladding

With grateful thanks to  
L.H.Sleightholme for  
paper and photocopying  
facilities & Richard  
Ogden, West Lutton for  
additional paper supplies.

**Ogden's**  
Gardening & Ground Maintenance Services  
Domestic and Commercial work  
Fully Insured  
Richard Ogden  
Tel: (Eve) 01944 738710 (Day) 07747 010777  
Email: [richard@ogdenservices.co.uk](mailto:richard@ogdenservices.co.uk)

# THE WOLDS VALLEY CHURCHES

## Services for the Month of August

### Anglican Churches

|                    |       |  |
|--------------------|-------|--|
| <b>2nd August</b>  | 10.30 | Holy Communion at St Mary's West Lutton  |
|                    | 18.00 | Evensong at St Mary's Wharram  |
| <b>9th August</b>  | 09.00 | Matins at St Andrew's Kirby Grindalythe  |
|                    | 10.30 | Holy Communion at St Peter's Helperthorpe  |
|                    | 10.30 | Morning Prayer at St Mary's Wharram  |
|                    | 10.30 | Morning Prayer at St Andrew's Weaverthorpe   |
| <b>16th August</b> | 09.00 | Holy Communion at St Mary's West Lutton  |
|                    | 10.30 | Holy Communion at St Mary's Wharram  |
|                    | 15.30 | Baptism at St Mary's West Lutton   |
| <b>23rd August</b> | 09.00 | Holy Communion at St Andrew's Kirby Grindalythe  |
|                    | 10.30 | Holy Communion (trad) at St Andrew's Weaverthorpe  |
|                    | 17.00 | Evensong at St Peter's Helperthorpe  |
| <b>30th August</b> | 17.00 | Baptism at St Mary's West Lutton   |
|                    | 12.00 | onwards Benefice Family Fun Day at Wharram Percy including a picnic, games and songs of praise |

Baptisms, Weddings, Funerals and other enquiries should be directed to the  
Rev Andy Bowden 01944 738814 or email [andy@woldsvally.plus.com](mailto:andy@woldsvally.plus.com)

For parishioners, your first point of call on all church related matters should be your churchwarden.

#### Minster Way Challenge 2015.

Congratulations goes out to the four intrepid (or maybe mad) walkers who set off on Friday evening at 18:00hrs from Beverley Minster, on a journey that would take them 50miles across God's country to finish 20hrs and 10 minutes later on the doorstep of York Minster. Sally & Stuart Hawkshaw, Helen Skul and the wolds vicar Andy Bowden (otherwise known as the Gnarled Hawthorns) trekked throughout the night without any sleep to complete the challenge. It was also great to have the company of Richard Hazelrigg for a couple of hours during Friday evening. Thank you Richard. Special thanks also go out to the following people. Nick Skul, who kindly got up at 4am, found out where he could get coffee from and met us just after 5 to supply us with much needed caffeine at Bishop Wilton. Lisa from the vicarage in Wharram-le-Street for picking us up at York Minster and brining us home. Both acts of kindness were greatly appreciated. To all those in the valley who have sponsored us, thank you. We earned every penny of your generosity, the blisters and aching muscles are there to prove it.  
Stuart & Sally

### Wolds Valley Methodist Church, Weaverthorpe

(Serving the whole Wolds Valley)

|                    |       |                                 |
|--------------------|-------|---------------------------------|
| <b>2nd August</b>  | 15.00 | Bible Fellowship                |
| <b>16th August</b> | 15.00 | Worship led by Rev. Denise Free |
| <b>30th August</b> | 15.00 | Bible Fellowship                |

Friends are welcome to worship at Sherburn Methodist Chapel at 10.30 when there is no service at Weaverthorpe.

All services are followed by a cup of tea or coffee and a chat about local life.

#### Coffee Mornings

Coffee mornings continue every Monday (except Bank Holidays) from 10.00 until 11.30

Baptisms, funerals or other enquiries should be addressed to:

**Rev Denise Free – Tel: 01723 512168**

### St Nicholas's Church, Butterwick

|                    |                  |  |
|--------------------|------------------|--|
| <b>9th August</b>  | 10.00            | 10th Sunday of Trinity. Benefice Eucharist at <b>St Nicholas's Butterwick</b> . President and Preacher, Rev. Jacki Tonkin.   |
| <b>30th August</b> | 10.00            | 13th Sunday of Trinity. Benefice Eucharist at <b>St Nicholas's Butterwick</b> . President and Preacher, Rev. Jacki Tonkin.   |
| <b>28th August</b> | 11.00 till 12.00 | 'Coffee with the Curate' at Thwing (TBC). (Please feel free to come and join us for coffee/tea and scones). Contact Rev. Jacki Tonkin 01377 267149.  |
| <b>29th August</b> | 09.30            | 'Men at The Mill breakfast club'. New faces welcome for a chat over coffee and 'bacon butties', at The Old Mill, Langtoft. Contact Rev. Stuart Grant, tel. 07795 560065 or Rod Buckley, tel. 07748 755607. |

Baptisms, weddings, funerals or other enquiries should be directed to:

**Rev Jacki Tonkin – Tel: 01377 267149**

### St Leonard & St Mary's RC Church, Malton

Masses at St Leonard & St Mary's take place at the weekend at 6.30 pm on Saturdays and 9.30 am on Sundays and various other services are held throughout the week.

Priest is Father Tim Bywater while Mrs Sue Westmacott is the pastoral assistant.

Address: Church Hill, Malton, YO17 7EJ. tel/fax: 01653 692128

email: [stleonards@tiscali.co.uk](mailto:stleonards@tiscali.co.uk)

#### Books at St Mary's,

##### Wharram

Just a reminder that Books are still available at St Mary's, Wharram. We have a very good selection to choose from and many thanks to the person who left some great books lately.

*Sue Hone*

#### Flower Festival

A huge thank you to everyone who supported the very successful event when St Peter's Church was transformed by wonderful arrangements created by Jean and her team of very talented ladies from Wold Newton. Thank you also to those who sponsored the arrangements and food, and everyone who helped in so many ways from preparing and serving the meal to making the churchyard look so tidy. Thank you also to Josh for the entertainment, accompanied by Mandy and John.

The winners of the garden goods raffle were Mr and Mrs Butler of Wold Newton. Special thanks must go to Gill Scruton who organised the event.

Thanks to everyone's great generosity the magnificent sum of around £2700 was raised.

## Weaverthorpe



Thank you so much to everybody who helped with and contributed to this event. Far too many to dare to single out any one person but just a few of the comments on the feedback slips were:

The gardens were beautiful, so much hard work, well done!

Brilliant, just not enough time!

Another good year, been speaking to some people who have booked a holiday to be at this event

Delightful gardens, delightful hosts

No doubt that the classic cars brought lots more people to the village - again thanks to everybody involved in that event.

We have had some late donations and sums in and the total now for the whole event is £2097.08. The Village Hall will benefit by just over £1400 towards the roof and other organisations/people who raised money were Ryedale Citizens Advice, Joe Harper for his trip to Peru, Guide Dogs for the Blind.

Joint winners of the Plant a Wheelbarrow competition were the Kirby Family for the wonderful peacock and Lisa and Imogen Turton for their edible fairy garden but our two judges (both from out of the village) said the others were beautifully planted too. Winners of the plant a boot competition were Billy Woodhall (under 8), Alex Mcgowan (under 11), Ash Greenwood (under 16).

The fun dog show was down on numbers but everybody who entered got a prize!!

See you in 2017?

Penny and Jeff House

### Weaverthorpe Clay Shoot

Many thanks to all who supported this event and donated prizes. We were lucky to have good weather and all who came along enjoyed the challenge! £400 was raised for St. Andrew's Church. Andrew and Julie Mason



### Weaverthorpe Weebles Toddler Group

Meet Mondays  
9.15-11.15 am  
at Weaverthorpe School  
(term time only).

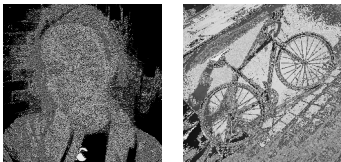
Adults and tots welcome, come and have a cuppa, a chat and some fun!  
(Please park at the bottom of the hill)  
Contact 01944 738389 for more details



### ROY AND ELSIE WILLIAMSON

Everybody who knew Roy and Elsie will be pleased that there is now a memorial to them in the village – a bench by the children's play area. Weaverthorpe Parish Council funded the purchase from The Community Investment Fund and a donation paid for the brass plaque.

The inscription reads:  
*Remembering Roy and Elsie  
Williamson who gave so much  
of their time to the life of  
Weaverthorpe*



### VICKY BENNETT SPONSORED CYCLE DONATIONS UPDATE

FANTASTIC NEWS.....

£750 TARGET REACHED  
£857.50 DONATED SO FAR (up to 16/7/15)

I still have two months to go until I do my ride so now let's see how much we can get up to. Wouldn't it be amazing to reach £1000?!

Thank you so much to all who have donated so far, if you would like to help me raise funds for Weaverthorpe Primary please use the localgiving link <https://localgiving.com/appeal/sponsoredcycle> OR cash & cheques can be taken to Weaverthorpe Primary School office.

I AM DOING THIS RIDE COMPLETELY SELF SUFFICIENT WITH NO SUPPORT VEHICLE, WHAT A CHALLENGE!!

Hadrian's cycleway route 72.  
174 miles over 3 days 15/16/17 September  
Day 1: Ravenglass to Silloth  
53 miles  
Day 2: Silloth to Haltwhistle  
64 miles.  
Day 3: Haltwhistle to South Shields  
57 miles.

Your support is very much appreciated and whatever you can donate how ever small will all go towards helping the children and the school.  
Thank you from  
Vicky Bennett & Weaverthorpe Primary

### Yorkshire Country Women's Association Weaverthorpe Branch

We enjoyed a wonderful presentation at our July meeting by Laila Bradley about Sledmere House and its family. Laila gave us fascinating insight into the history and kept us laughing with an apparently endless source of anecdotes. We are planning an evening visit to Sledmere in the next programme with supper in the café (and Partners can come too!!)



There is no meeting in August. At our September 8<sup>th</sup> meeting we will hear about the work of Scarborough Libraries. Competition is an old book.

Penny House, Chair  
01944 738841

The reason you can't hear what I'm saying is because I don't make any noise at all!



## Luttons

### Yorkshire Country Women's Association Luttons Branch

Our July meet was a trip to Burnby Hall Gardens to see the famous collection of water lilies. It was a glorious afternoon to stroll around a peaceful haven and admire the sculpture collection on display at the present time.



The next meeting will be at the house of a member who lives in Huggate. Rozelle is going to give a short talk on My Family History.

Travel details to follow. If anyone would like to join us ring Marian 01944 738510 you will be most welcome.

### Governors required

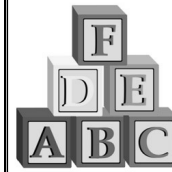
Luttons CP School is looking to recruit two Associate Governors to join their proactive and friendly Governing Body.

The appointment of two new Associate Governors will help support the school on its journey to become Outstanding. We are looking to recruit people with business knowledge and/or budgetary management skills, to further enhance the existing skills of the current Governors.

A successful candidate would be required to attend meetings, read documentation, respond to email requests, attend off-site training, and familiarise themselves by visiting school to build relationships with staff and pupils. This is a very fulfilling voluntary role, where full training and support will be given. For more information visit [www.northyorks.co.uk](http://www.northyorks.co.uk). Becoming a Governor. If you would like more information or would like to apply please contact Rachel Macdonald at [stanfordmacdonald@hotmail.co.uk](mailto:stanfordmacdonald@hotmail.co.uk)

### Luttons CP School

has spaces available for children aged 3-4 years old in their Nursery. Led by a highly qualified early years practitioner, the team at Luttons offer a warm family atmosphere with creative, child-led fun and learning.



Why not use your all, or some, of your free child-care hours with us as we offer morning sessions Monday to Friday.

Come and see what we have to offer. Please call 01944 738232 for more details.

*Together We Care, Learn and Grow*



### Luttons School has got the Ukulele Bug!

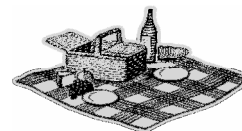
Thanks to Dave Mason and The Seaside Strummers!

Children from Luttons CP School, West Lutton, are learning to play the Ukulele thanks to some kind fundraising by local musicians. Sarah Dew, freelance teacher, has been teaching music at Luttons School since September 2014. The small rural school has limited resources for music so Sarah put out a request for donations of musical instruments to some of her contacts. As a result Dave Mason and the Seaside Strummers, a ukulele band from Scarborough, decided to assist by kindly busking in Scarborough Town Centre. The band raised £157 from the generous donations of the local people and with that money they bought Luttons School a set of ukuleles.

The school welcomes support from local business and groups and any willing to make further donations would be gratefully received. The school can be contacted on 01944 738232.

The Community Library at Luttons School will be open a couple of times during the Summer Holidays, on Tuesday 4<sup>th</sup> and Tuesday 18<sup>th</sup> August between 1-3pm. There will be fun activities and a chance to take part in the Summer Reading Challenge. Open to all, not just families attending Luttons School.

## Kirby Grindalythe



You are cordially invited to Kirby Grindalythe Luncheon Club

This takes place the first Friday in each month from 12 noon to 2.00pm at Kirby Grindalythe Village Hall. Remaining dates for 2015 are as follows:- 7<sup>th</sup> August, 4<sup>th</sup> September, 2<sup>nd</sup> October, 6<sup>th</sup> November and 4<sup>th</sup> December. Open to all residents of the Great Wold Valley from Wharram Le Street to Butterwick. No age restriction! Transport to and from the event will be available, if required. Many thanks to the North Yorkshire County Council's Stronger Communities Programme for their partial funding of this project.

### Kirby Grindalythe Parish Council

The Annual General Meeting of the Parish Council was held on 15<sup>th</sup> June and was attended by six of the seven councillors. Sally Lovelock was appointed as Chairperson, Keith Acomb as Vice Chair and John Sawdon as Treasurer. Councillor Jainu-Deen was congratulated on his new appointment as representative for the Wolds Valley.

Matters arising from the last meeting were discussed. These included the use of the newly installed benches and confirmation that a new website for the parish is being set up shortly.

A draft circular regarding suggestions for the 106 agreement monies currently being held by Ryedale Council was discussed. This will go out with the next Warbler. All suggestions to be submitted in by 1<sup>st</sup> August to either a Councillor or the Post Office. Contact details for all Councillors to be displayed on the village trail boards.

A planning application for Harrison Farm (Kilham) Ltd for the erection of an agricultural building for housing pigs was discussed. The Councillors arranged to be undertake a site visit.

Kaye Husband was presented with a bouquet of flowers in recognition of her long contribution to the Parish Council.

### Kirby Grindalythe Church

It doesn't need to be high brow; it just needs a receptive audience and an enthusiastic cast to make a most enjoyable musical evening. Also the food does help!

Thanks to everyone who participated. Has anyone found two pink hair nets and curlers??

### Kirby Grindalythe Village

Thanks to the dedicated band of gardeners, handy men and women who have revitalised the village signs and planted tubs with flowers and also cleared the footpath at the bus stop. It does make a difference. GOOD ON YOU - THANKS.

### Kirby Grindalythe Village Hall

A Post Harvest Supper.

Wine and savouries to be held at Low Mowthorpe Farm House thanks to Judith and Andrew. All welcome. It will take place on Sunday evening the 4<sup>th</sup> October at 7.00 pm.

## General News

### **Are you plagued by nuisance telephone calls?**

There is a simple way that you can stop the majority of these calls. You can register with the Telephone Preference Service. It is completely FREE.



If you wish to register with the Telephone Preference Service (TPS) you may do so by calling the registration line on 0845 070 0707 or by visiting [www.tpsonline.org.uk](http://www.tpsonline.org.uk)

It is very simple to register and takes only a few minutes.

If you know someone who is suffering from these calls, please pass on the above details or better still, if they are elderly or infirm, it would be great to contact the service for them.

We thank Kate Megginson of Wharram for sending us these details. Kate has already managed to help several people, some of whom, due to incessant calls had become too frightened to answer the phone.

### **Beaver group in Langtoft.**



We meet every Friday (term time) in the Church Rooms Langtoft at 5.15 - 6.15pm boy's and girl's age 6 to 8 years are welcome to come and join us for activities and games. Contact Beaver

Leader Denise on 01377 267117 for more info.

4

### **Events At Dalby Forest this Summer**

#### **Badger Watching**

A chance to watch these beautiful creatures in their natural setting. Booking ESSENTIAL. For more information and booking call 01723 367864.

#### **Superworm Activity Trail**

Following on from the successful Gruffalo Trail we now have the Superworm trail based on the ever popular Julia Donaldson book. The trail is available from March to October and activity packs can be purchased from the Visitor Centre. For more information contact 01751 460295.

#### **Dalby Duck Dash**

Sunday 9<sup>th</sup> August - 11am - 3pm

The Annual Dalby Duck Dash will be taking place in the stream behind the visitor centre and the first race will start at 11am. Tickets will be on sale from 10am. Cash prizes and lots of other activities to get involved in.

#### **Bigger, Better Bug Bonanza**

Monday 31<sup>st</sup> August - 11am - 3pm

Come and enjoy a spot of bug hunting, take part in the bug trails and listen to the bug tales in the Enchanted Woodland at Adderstone Field.

#### **Active Forest Cycling Courses with Dalby Bike Barn**

##### **MOUNTAIN BIKING FAMILY BEGINNERS**

Green Gruffalo and bridleways to Ellerburn Tea Room and skills area. 3 hour session including tearoom stop; introduction to family mountain biking in the forest - understanding the trail network and skills areas and on the bike functions of the bike and rider set up. 11.00am to 12.45pm, 1.15pm TO 2.00pm (30 minutes at tea room, lunch not provided).

**Dates:** Wednesday 5<sup>th</sup> August, Wednesday 12<sup>th</sup> August, Wednesday 19<sup>th</sup> August, Wednesday 26<sup>th</sup> August

**Price:** £5 per child (10% for bike hire), £7 per junior (aged 12-15), £10 per adult

##### **BEGINNER SKILLS**

Green/Blue trails, 3 hour session; introduction to mountain biking in the forest - trail map reading, trail network, basic bike skills explained: on the bike - functions of the bike and rider set up. Guided ride with skills pointers. 11.00am to 2.00pm.

**Dates:** Sunday 2<sup>nd</sup> August, Sunday 9<sup>th</sup> August, Sunday 16<sup>th</sup> August, Sunday 23<sup>rd</sup> August, Sunday 30<sup>th</sup> August

**Price:** £7- 11's and under (10% off bike hire), £12 per adult

##### **BIKER BOYS SKILLS**

Green and Blue trails (Pace Bike Park). Teen boys beginner group for ages 13 to 19. 3 hour session: - introduction to mountain biking in the forest - reading the trail map, finding your way around the trail network. Basic bike skills explained. On the bike - functions of the bike and rider set up. Guided ride with skills pointers. 11.00am to 2.00pm.

**Dates:** Thursday 6<sup>th</sup> August, Thursday 13<sup>th</sup> August, Thursday 20<sup>th</sup> August, Thursday 27<sup>th</sup> August

**Price:** £15

##### **BIKER GIRLS SKILLS**

Green and Blue Trails. 3 hour session:- Teen girls beginner group for ages 13 to 19. Session includes an introduction to mountain biking in the forest - finding your way around the trail network, basic bike skills explained, on the bike - functions of the bike and rider set up. Guided ride with skills pointers, female instructor. 11.00am to 2.00pm.

**Dates:** Thursday 6<sup>th</sup> August, Thursday 13<sup>th</sup> August, Thursday 20<sup>th</sup> August, Thursday 27<sup>th</sup> August

**Price:** £15

##### **WOMEN'S ONLY BEGINNERS**

Green and Blue Trails and Skills area. 3 hour session; for ages 20 years plus, introduction to mountain biking in the forest, finding your way around the trail network and link to Thornton Le Dale. Basic bike skills explained, on the bike - functions of the bike and rider set up. Guided ride with skills pointers, female instructor. 11.00am to 2.00pm.

You will learn the importance of the correct body position on your bike, how to build confidence and control and how to master technical features.

**Dates:** Friday 7<sup>th</sup> August, Friday 21<sup>st</sup> August

**Price:** £20 per person

##### **FIT AS 50+**

Trail and bridleways to Ellerburn Tea Room and back. 3 hour session, mixed gender beginner group - introduction to mountain biking in the forest, finding your way around the forest trail network and links to Thornton Le Dale. Basic Bike Skills explained, on the bike - functions of the bike and rider set up. Guided ride with skills pointers. 11.00am to 12.45pm, 1.15pm to 2.00pm, 30 minutes at tea room (Lunch not provided).

**Dates:** Monday 3<sup>rd</sup> August, Monday 17<sup>th</sup> August

**Price:** £20

Booking is essential, please call us on 01751 460049.

##### **BIKE MAINTENANCE**

Outside weather permitting, basic bike maintenance 2.5 hour session, ages 16+. You will learn how to remove wheels, change inner tubes, adjust headset, set up controls and suspension and about gears and chain adjustments. 10.00am to 12.30pm.

**Dates:** Sunday 2<sup>nd</sup> August, Sunday 6<sup>th</sup> September, Sunday 4<sup>th</sup> October

**Price:** £25 per person

**Booking for all of these courses and skills sessions is ESSENTIAL. Please call us on 01751 460049.**

### **Flu clinics to be held at Sherburn and Rillington Surgeries**

Oct 5<sup>th</sup> Rillington Surgery

2.30-6pm

Oct 8<sup>th</sup> Sherburn Surgery

11-3pm

October 16<sup>th</sup> Sherburn Surgery

2-6pm

October 19<sup>th</sup> Rillington surgery

3-6pm



The village halls will probably be on 13<sup>th</sup> October but confirmation will be in the September issue.

### HUNTER TRIAL

MONDAY 31<sup>ST</sup> AUGUST  
2015  
(BANK HOLIDAY)



Middleton (East) Pony Club is hosting its 7<sup>th</sup> annual fundraising Hunter Trial.

Classes range in height from 45cm up to 90cm to suit lead rein beginners up to experienced riders looking for fun. Schedules are available from most local equestrian outlets or by contacting Iain Simpson on 01944 738888

or [iain-simpson@btconnect.com](mailto:iain-simpson@btconnect.com)

Competitors and spectators welcome.  
Refreshments available on the day.

ENGLAND'S PREMIER TRIBUTE TO WILLIE NELSON

# FULL NELSON

A TRIBUTE TO 60 YEARS OF WILLIE

LIVE AT WEAVERTHORPE VILLAGE HALL

## FRIDAY 7 AUGUST

Admission £5 inclusive of intermission refreshment  
Doors open 7.30pm + [www.fullnelson.co.uk](http://www.fullnelson.co.uk)

### Teddy Bears' Picnic

Sunday 2<sup>nd</sup> August  
10.00 am-5.00 pm

Teddy Treasure Hunt  
Face Painting ~ Bouncy Castle  
Donkey Rides ~ Fancy Dress Parade  
and more!

Usual admissions apply or FREE to under 16s with a teddy!



Sledmere House  
Sledmere, Driffield  
YO25 3XG

(01377) 236637

[www.sledmerehouse.com](http://www.sledmerehouse.com)